



Dynamic Routing

Integrate. Automate. Accelerate. Build the most efficient routes - at the click of a button.

What is Dynamic Routing?

Schedule work in minutes. The first product of its kind designed specifically for the green industry, Dynamic Routing automates your back office process and builds efficient routes that honor your business rules.






Why Do You Need It?

Inefficient routes waste time and money. Building smart routes can take significant effort, especially when dealing with your business's complexities – technician skills, licensing and availability, vehicle capacity, traffic patterns, multiple service lines and more.

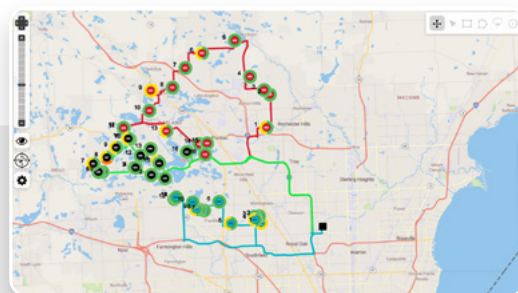
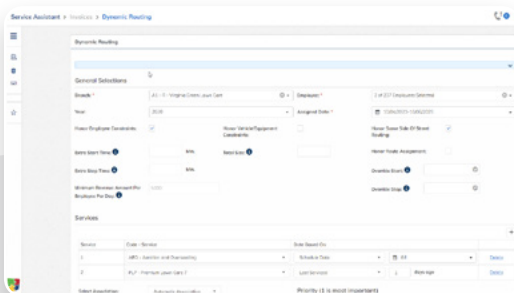
With Dynamic Routing, you can solve these problems with the click of a button and generate smart routes in minutes.

- ✔ Configure constraints and stop priority
- ✔ Simplify route planning using a proprietary algorithm
- ✔ Reduce risk by ensuring routes honor business rules and configured constraints
- ✔ Allows planners the flexibility to fine-tune routes after automation
- ✔ Save back office and in-field time, money and labor with the most efficient routes possible

KEY BENEFITS

-  Increased revenue and more profitable stops
-  Decreased costs and fuel
-  Savings on back office hours and labor
-  Engaged, satisfied techs
-  Integrated with Service Assistant® 5

Build Routes in Minutes



How Do You Get Started?

Call 800-422-7478, visit realgreen.com or contact your account manager for more information.